

MORTIMER CRESCENT

LONDON, NW6

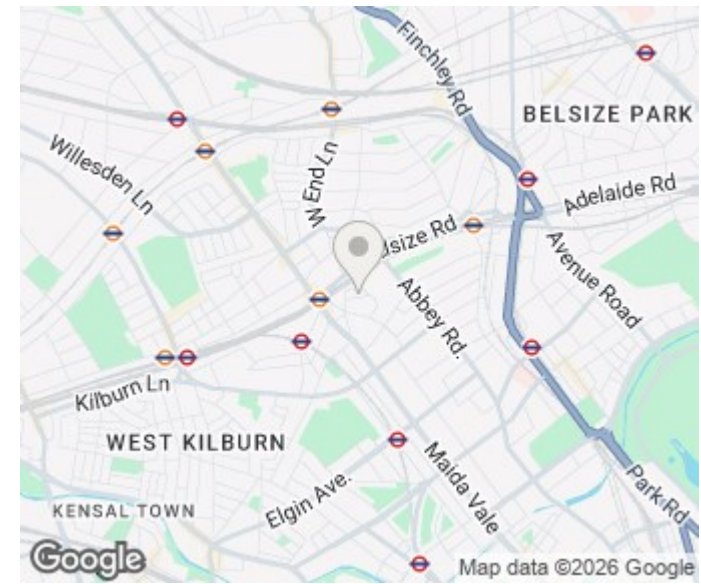
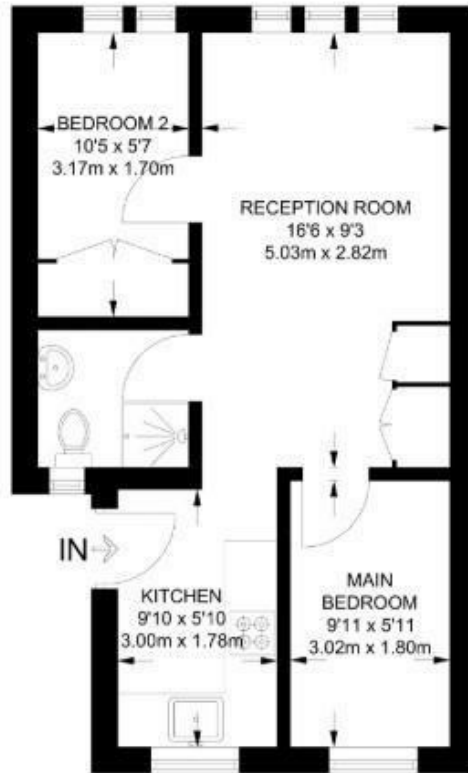
£2,100 PER MONTH

Ideally situated within a popular residential block, this charming two-bedroom flat is well presented throughout and benefits from an excellent location just moments from transport links and local amenities.

The property is conveniently located close to a variety of shops, bars, and restaurants in Kilburn, with excellent transport connections nearby, including Kilburn Park Underground Station.

PMP | INTERNATIONAL

APPROXIMATE FLOOR AREA = 382 SQ FT / 35.8 SQ M
INCLUDING LIMITED USE AREA (12 SQ FT / 1.1 SQ M)



Energy Efficiency Rating		Current	Potential
Very energy efficient - lower running costs			
(92 plus) A			
(81-91) B			
(69-80) C		77	
(55-68) D			
(39-54) E			
(21-38) F			
(1-20) G			
Not energy efficient - higher running costs			
England & Wales		EU Directive 2002/91/EC	

Agents Note: Whilst every care has been taken to prepare these particulars, they are for guidance purposes only. All measurements are approximate and are for general guidance purposes only and whilst every care has been taken to ensure their accuracy, they should not be relied upon and potential buyers/tenants are advised to recheck the measurements

London
PMP International
94 Belsize Lane
Belsize Park
London
NW3 5BE

020 7701 2878
info@pmpi.co.uk
www.pmpi.co.uk

PMP | INTERNATIONAL